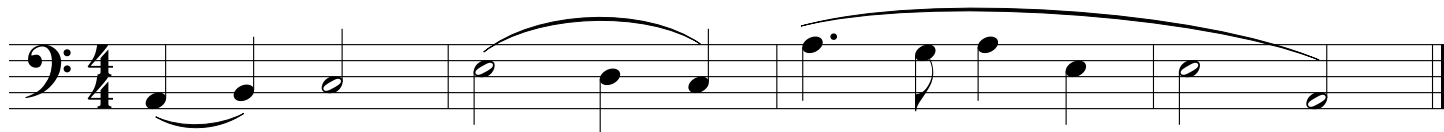


Lesson 15: Slurs and Ties

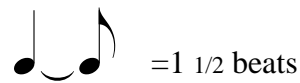
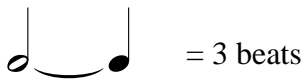
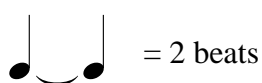
A **slur** is a curved line that connects two or more notes of different pitches.

A slur means the notes should be played as smoothly as possible, with no space in between.



A **tie** is a curved line that connects two notes of the same pitch.

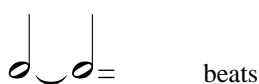
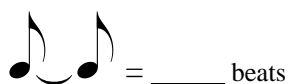
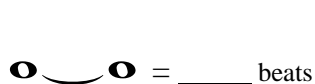
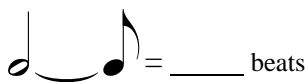
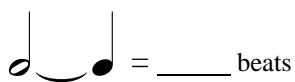
A tie means to hold the note for the combined rhythmic value of the two notes, as if they were one.



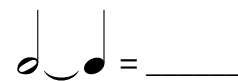
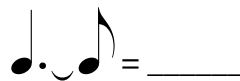
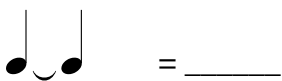
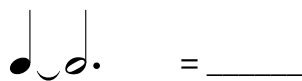
Tied notes are placed on two adjacent notes of the same pitch and played as one note.



1. On each line, write the number of counts each pair of tied notes would receive.



2. On each line, write the note that would equal the number of beats that each pair of tied notes would receive.



3. Draw circles around the ties. Draw squares around the slurs.



4. Draw circles around the ties. Draw squares around the slurs.

